



WATERCARE



COMBIPUMP 
WASTE WATER PUMP

**Don't pump money down the drain installing
expensive drainage systems.**

The only solution specifically designed for pumping waste water
from island based combination ovens.



www.watercare.co.uk

Introduction

The WaterCare CombiPump series has been designed and developed by our own research and development team at the request of a leading combination oven manufacturer specifically requiring waste water from their oven to be pumped away at a height of just 40MM from the floor.

The CombiPump range has become an almost essential part of any commercial kitchen set up where floor gulley drainage is absent or where ovens are sited away from the drainage points of the kitchen such as islands.

Either CombiPump System can be installed in a convenient position as your chosen installer can locate the inlet fittings.

The new improved Combi Pump range has a capacity to pump away up to 160 l/pm which not only means it can now be connected to 2 ovens but also gives it the versatility to be used in various other circumstances where drain water is required to be removed and no immediate drainage is available.

CombiPump Selection and Application

The EWC Combi Pump is available in two colour coded models for easy identification.

The CombiPump4 comes in a Light Blue Cabinet and the CombiPump7 in a distinctive Midnight Blue

The CB4 is designed to be used on ovens where the waste outlet from the oven is as low 40mm from the floor and requires the pump to activate at that level in order to prevent backflow into the oven.

The CB7 allows for a waste outlet up to 70mm with the pump activating at this higher level.



Please ensure you have ordered the correct unit for your particular oven

Installation

THIS UNIT MUST BE FITTED WHERE ANY WATER SPILLAGE WILL NOT CAUSE DAMAGE

NB. ONLY ONE INLET CAN BE DRILLED INTO THE CABINET. IF CONNECTING TO 2 OVENS THE OUTLETS FROM THEM MUST MERGE PRIOR TO THE COMBI PUMP INLET

Consideration should be made when positioning the CombiPump to allow for access for servicing and maintenance

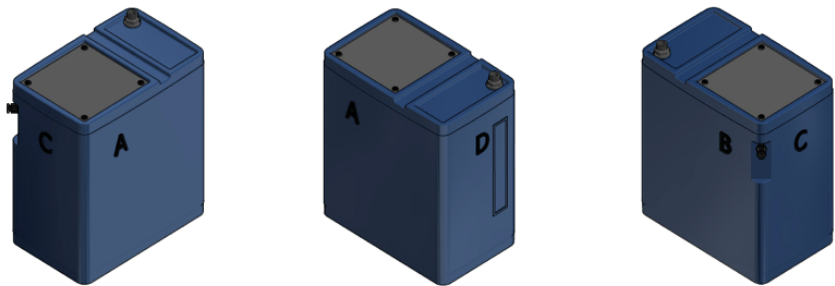
1. Position the CombiPump in the required area and using the diagram below or the supplied template. Decide where the inlet position will be made.
2. Drill the desired inlet hole into the holding tank dependant on the model and fit the deflector supplied. NB See information below for minimum inlet heights
3. Inlet MUST NOT be drilled in hatched areas or anywhere on Side D . This will damage the pump void any warranty and result in breakdown of the unit.

Minimum Inlet heights

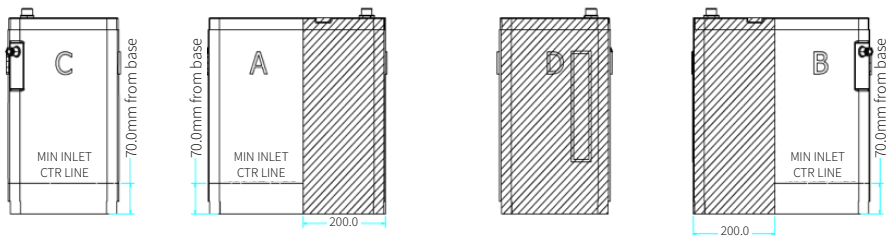
CombiPump 4: The height of the inlet on the Combi 4 should be drilled no lower than 70 mm centre line. The 70 mm should be measured from the bottom of the cabinet upwards. Pump activation 40mm

CombiPump7: The height of the inlet on the Combi 7 should be drilled no lower than 190 mm centre line. The 190 mm should be measured from the bottom of the cabinet upwards. Pump activation 75mm

The Combi Pump comes with its own inlet placing template to ensure correct positioning or you can follow the guidelines as below :



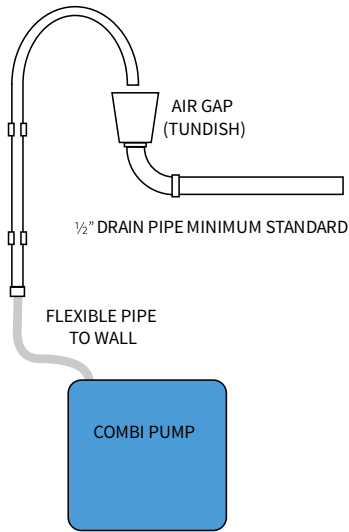
Hatched areas indicate where inlet connections are NOT permitted



Dimensions and Connections

Dimensions: Height 470mm, Width 250mm, Depth 450mm.
Inlet 1.5 " with supplied Deflector. Outlet 3/4 " BSP to 15mm or 22mm pipe. Airgap required at top of run.
Run must be vertical with no bends

Outlet pipe size	Head	Capacity
15mm	9 Metre	160 l/pm



Specifications

Pump	Pump Duty	Continuously rated
	Maximum temperature	96° C
	Operating temperature	85° C
Electrical	Phase	Single 239 Volts 50HZ
	Current	2.45 Amps FLC
	Motor output	0.4kW
	Pump speed	2800 RPM
Flow and Pressure	Maximum input flow	80 Litres per minute
	Output flows	160 Litres per minute @ 9M head
	BMS high water	Available on request
Control	Method	Float switch
Cabinet	Outer casing	M.D.P.E.
	Capacity	15 Litres
	Dimensions CB4 & CB7	H:470mm W:250mm D:450mm
	Inlet water connection	1 ½" connection (Deflector and connector supplied)
	Outlet water connection	¾" BSP PVC

Pumping Capacities

Having an operational ability to pump away to a 9 metre head at up to 160 litres per minute and to withstand water temperatures up to 96 degrees centigrade together with a choice of capacities to suit any size oven means the CombiPump series is the ideal alternative to expensive alterations of existing drainage systems.

*Figures are approximate and for indication only, volumes may vary dependant on water temperature and contaminants.

FAQ's

- Q:** Can I connect 2 appliances to one Combi Pump?
- A:** Yes providing outlets from the 2 appliances merge into a single inlet to the Combi pump and the total incoming water is within the capacities of the pump.
- Q:** What is the maximum number of bends I can have in the pipework taking the water away from the Combi Pump?
- A:** Ideally there will be no bends in the pipe run. Any bends in the pipe run will reduce the efficiency and head distance of the Combi Pump.
- Q:** What is the warranty period on a Combi Pump?
- A:** Combi Pumps come with a 12 months parts and labour warranty against manufacturing faults.
- Q:** Will my Combi Pump need servicing or cleaning?
- A:** Although there is no regular servicing needed on the Combi Pump, due to the nature of the discharged water it may require regular cleaning to remove food or fatty deposits which may cause the pump to malfunction. Please contact WaterCare Service department for a quote .



WATERCARE